

Los Angeles Trip, 1973 Western Metal and Tool Exposition (Westec); search for machine shops capable of building parts for high pressure machines; looking for metal sources; looking for machine tools.

Left Provo 7am March 10 - returned to Provo March 17 at 6pm.

HTH Inc's Ford Sedan LTD used to make trip.

Trip made by H. Tracy & Ida-Rose Hall

Lodging: Patron's Apartments, 1581 E. Temple Way, Los Angeles

2 Lewis and Rose Warren

7 nights

\$ 42.00

Food: 7 days @ \$5.00

35.00

misc: parking, payphones

4.00

Total out of pocket expenses

\$ 81.00

for which H.T. Hall request reimbursement

Y2 check # 175

20 March 1973

Inglewood

RENT MUST BE PAID IN ADVANCE

Date Mar 7, 1973

7206

Received From

Travis Hall

of Century Sturo

Dollars \$ 42.00

For Rent of # 224

From Mar 7, 1973

To Mar 7, 1973

HOW PAID

CASH

CHECK

MONEY ORDER

BY

Paul E. W. Jensen

RPM Machine

Lawrence W. Mack ^{owner}

Rawlings & Palmer St.

Southgate

Food shop - 5 Bullards

Blandhard, 2x5" long bar

with 45° head attach - can
leave bases flat on bed.

\$850. ea labor on bases

90 ea 4 on the bars

L & K machine

Huntington Park

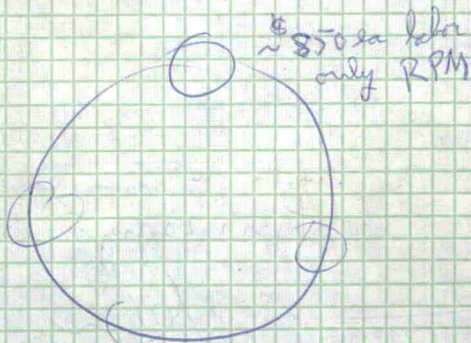
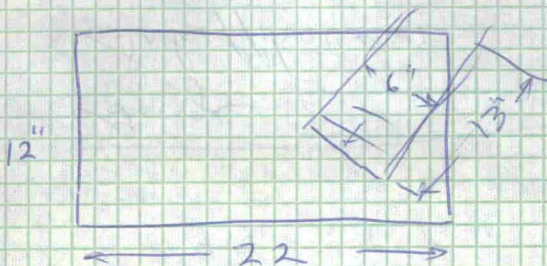
largest job shop Southern
Calif.

Calif Flame Hardening
Hunt. Sch.

mechanite water quenched

4340 steel
Rc 28-32

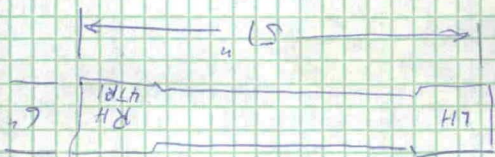
4TPI



Count of eye 22.05 x 16.10
x 12.7

George
Schiffman

12th
4370 Stair R 28-32



holes only

Wicket
#90/box
machine

WESTEC EXPOSITION



Name H. TRACY HALL
(Please type or print clearly)

Title PROF.

Company BRIGHAM YOUNG UNIV.

Address BLDG. B-41

City & State PROVO, UTAH Zip 84602
~~84601~~

1973 WESTERN METAL AND TOOL EXPOSITION

This badge will admit you to the WESTEC Exposition ONLY. Do not complete this badge if you plan to register for the WESTEC Conference since Conference badge will admit you to Exposition also.

If you plan to attend Exposition only, this badge must be validated at the Registration Desk at the Los Angeles Convention Center.

EXPOSITION HOURS

Monday, March 12 . . . 1:00 pm—9:00 pm
Tuesday, March 13 . . . 1:00 pm—9:00 pm
Wednesday, March 14. . 1:00 pm—9:00 pm
Thursday, March 15 . . 1:00 pm—9:00 pm
Friday, March 16 . . . 10:00 am—5:00 pm

There are separate registration fees for the ASM/SME Conference technical sessions (see opposite panel). Separate registration forms for the ASNT technical sessions may be obtained from the American Society for Nondestructive Testing, 914 Chicago Avenue, Evanston, Illinois 60202.

WESTEC '73

MARCH 12-16 • LOS ANGELES CONVENTION CENTER
HARBOR FREEWAY & 11TH STREET • Downtown Los Angeles

5 **DYNAMIC DAYS OF METALWORKING DEMONSTRATIONS!** See \$10 million in new and improved manufacturing equipment and materials demonstrated by 300 leading companies that serve Western industry. Here are just a few categories of exhibits that you will see—equipment and materials geared to give you increased production efficiency at less cost: Machine Tools and Accessories • Numerical Control Equipment • Forming Presses and Machinery • Tooling Materials • Fixtures, Dies and Components • Welding and Joining Equipment • Fasteners and Adhesives • Ferrous and Non-Ferrous Metals • Material Handling Systems • Testing, Research and Inspection Equipment and Instruments • Assembly Systems • Quality and Process Control Equipment • Cleaning and Finishing Equipment • Pollution Control Equipment.

4 **BIG CONFERENCE DAYS . . . 36 technical sessions, more than 125 papers. Sessions start at 9:30 a.m. and 2:00 p.m. Use form inside to register in advance for ASM and SME technical sessions.**

MONDAY, MARCH 12

Surface Treatment of Metals . . . Beryllium . . . Fracture Control . . . Penetrants . . . Nuclear Components . . . Material Handling . . . Quality Assurance

TUESDAY, MARCH 13

Environmental Control . . . Non-Metallics . . . Space Shuttle . . . Corrosion Resistant Materials . . . Fracture Control . . . Acoustic Emission . . . Retraining and Re-Employment of Engineers

WEDNESDAY, MARCH 14

Infrared and Thermal Testing . . . Computerized Manufacturing . . . OSHA . . . Heat Treating . . . Casting Technology . . . Joining Methods

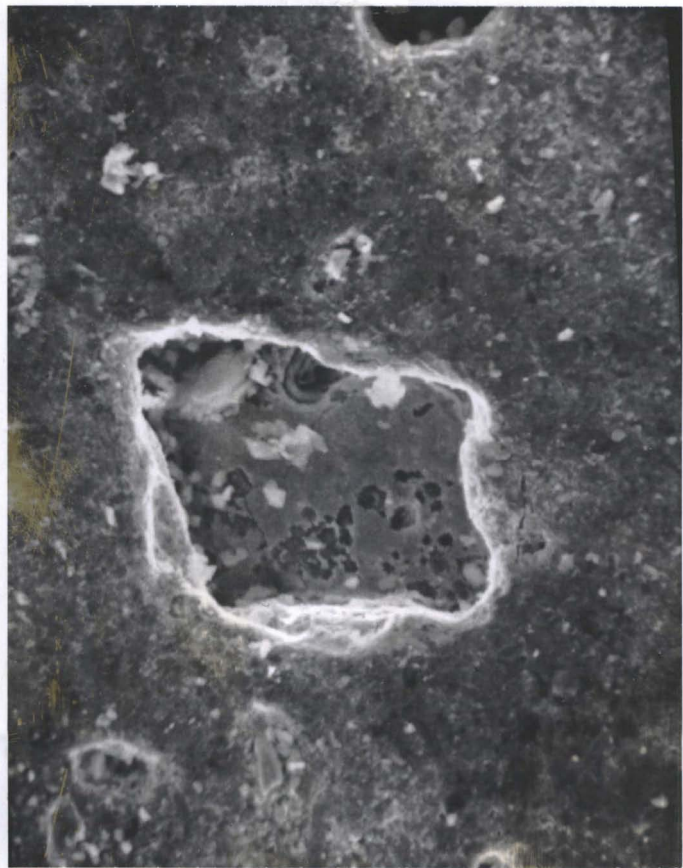
THURSDAY, MARCH 15

Penetrating Radiation . . . Sonic Testing . . . Advanced Production Engineering . . . Material Removal . . . New Concepts in Productivity . . . Metallography
Transportation Materials . . . Aerospace Applications



International Scientific Instruments, Inc.
Suite 5, 970 San Antonio Road
Palo Alto, California 94303
Phone (415) 328-8733

Donald J. Evins
President

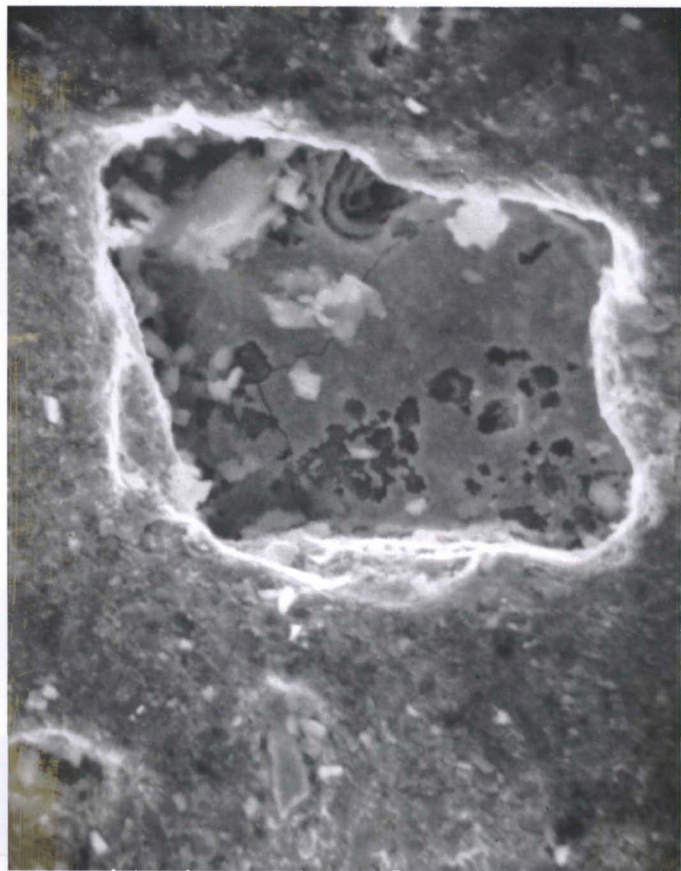


2000 X.
Megadiamond
13 March 1973

at

Westec

J.



3000x
Megadiamond

13 March 1973

at

Westec

2.

Territory includes Utah

Todd Machinery

WILLIAM R. FALSEY

Regional Manager

gave 10
negotiated to
to attempt polishing



SPEEDFAM CORPORATION

509 North Third Avenue • Des Plaines, Illinois 60016 • 827-8891
8006 Comanche Avenue • Canoga Park, California 91306 • 882-7869

WELCOME TO THE LOS ANGELES CONVENTION CENTER

MARK YOUR
LOCATION



READ THIS CONTRACT, IT LIMITS OUR LIABILITY
Cars leaving parking area cannot regain admission without additional fee. Park and lock your car. This check entitles the bearer to one Parking Space. The management hereby declares itself NOT RESPONSIBLE for, and assumes no liability arising from, fire, theft, damage to or loss of the vehicle or any article left therein. ONLY A RENTAL OF SPACE LICENSE IS GRANTED HEREBY AND NO BAILMENT IS CREATED. Any car left beyond the parking time limit will be subject to removal by police towing car.

Acceptance of this check constitutes acknowledgment by holder that he has read and agrees to the foregoing conditions.

PLEASE LOCK VEHICLE

THANK YOU!

ENJOY YOUR VISIT

839709
607638

Fresco Industries

1125 West 190th St.

Gardena, Calif 90247

(213) 532-8222

make thread
mill attachment

60 4th/in

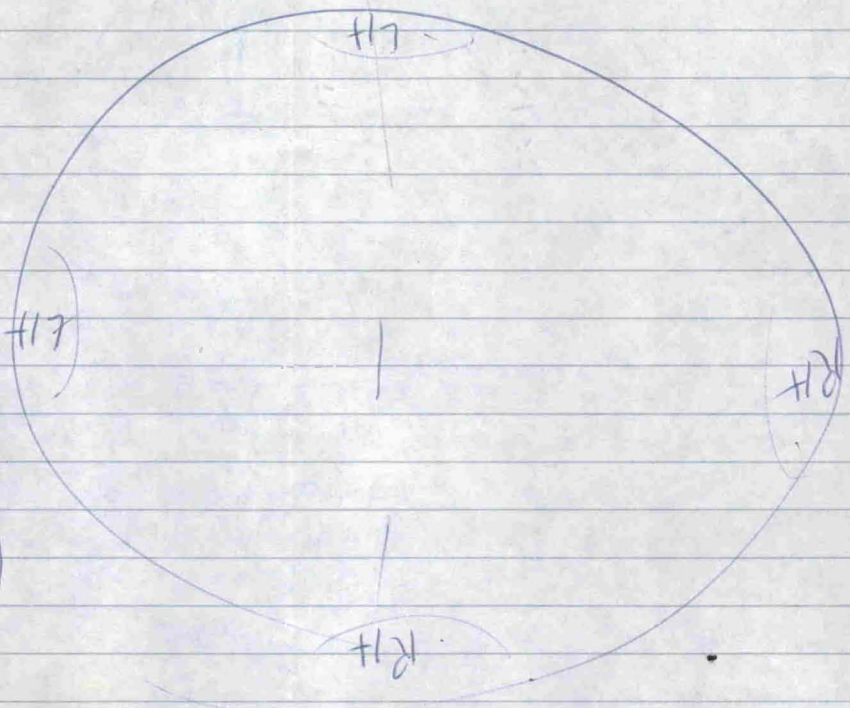
no cant do

could for ~
\$30,000.

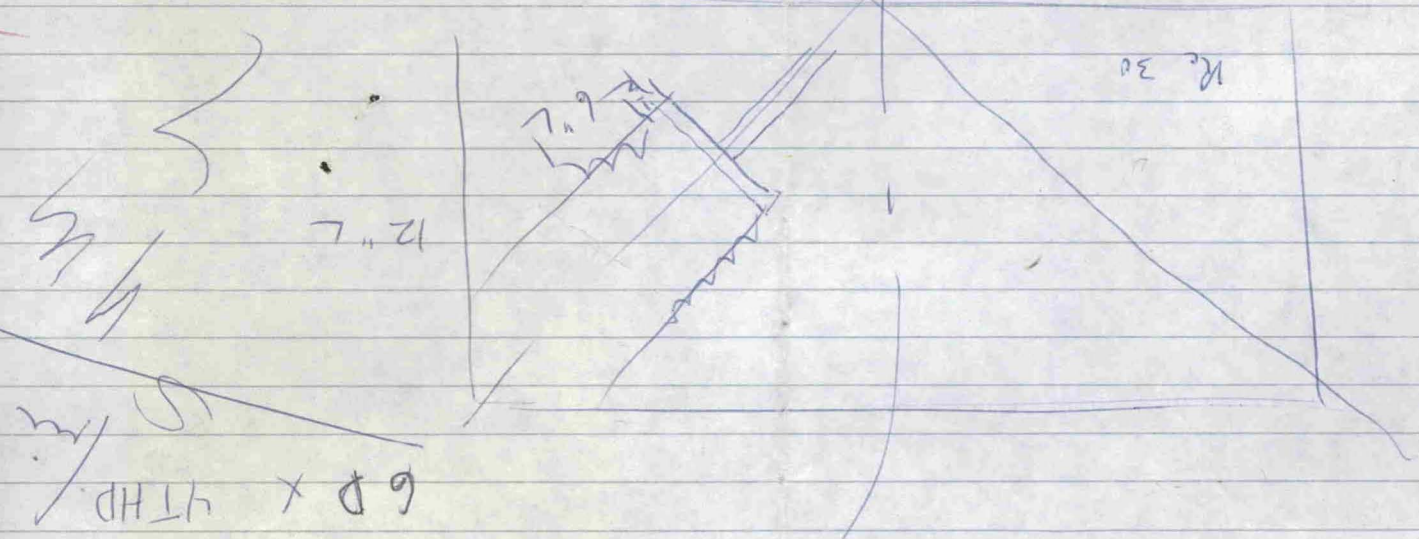
~5000 the mile ~~west~~ from }
 Along Bay Area

60a

ST. T. & A. Dis
 1931 The Broadway LA
 90031
 213-222-0251
 Guy Wilkinson



General T. }
 out by } Douglas of LA/T



60 x 4THD
 5m

This side of
 Alameda (with) to just under Fremont 5